



2018 Rolex Big Boat Series

September 12-16, 2018

NOTICE OF RACE

St. Francis Yacht Club

includes amendment #106/17/18

The notation [NP] in a rule in the NOR means it shall not be grounds for protest by a boat. This changes RRS 60.1(a).

1. GENERAL

- 1.1. St. Francis Yacht Club is the Organizing Authority (OA) of the Rolex Big Boat Series.
- 1.2. US Sailing is the national authority of the venue. World Sailing provides a downloadable copy of all the [US Sailing prescriptions](#).
- 1.3. [US Sailing](#) is the Rating Authority (RA) for the ORR class.
- 1.4. [Northern California PHRF](#) (NCPHRF) is the RA for the Sportboat class.
- 1.5. [Bay Area Multihull Association](#) (BAMA) is the RA for the Multihull class.
- 1.6. The term Skipper, as used herein, is defined as the person, whether or not the owner of the boat, who is designated on the entry form for the purpose of RRS 46 and is the person in charge as it relates to the Racing Rules of Sailing or any matters related to the Rolex Big Boat Series. The Skipper is responsible for the boat, its handling and safety, the conduct of its crew before, during, and after the race, and compliance with the rules.

2. RULES

- 2.1. The regatta will be governed by:
 - a. The *rules* as defined in The Racing Rules of Sailing;
 - b. Fleet rules specific to the following classes: J/120 Fleet 5, and J/105 Fleet 1.
- 2.2. All competitors shall wear a PFD at all times while on the water, other than brief periods while adding or removing clothing, or below deck. The 'Y' flag will not be flown. This changes RRS 40 and the preamble to Part 4. [NP]
- 2.3. RRS 48.2 is deleted.
- 2.4. US Sailing Prescriptions to RRS 63.2 and 63.4 are deleted.

3. ADVERTISING

Boats shall display advertising chosen and supplied by the Organizing Authority. If this rule is broken, World Sailing Regulations 20.9.2 applies.

4. ELIGIBILITY

- 4.1. The regatta is open to all:
 - a. One Design boats of the Pac52, J/111, J/120, J/105, Farr 40, **J/88** and Express 37 classes.
 - b. Monohull boats with a LOA greater than 35' and a current fully or partially measured ORR rating certificate.
 - c. Monohull sportboats with a LOA between 28' – 36' and a current NCPHRF rating between 9 and 81. A sportboat is defined by having a SA_DW/D ratio ≥ 61 , a D/WL ratio ≤ 117 , carries a sprit and has a LWL <33'.
 - d. Multihull boats with a LOA greater than 33' including the pole, and a BAMA rating of -45 or faster.
- 4.2. For a class to remain eligible for a start, it must have at least six (6) entries by August 1, 2018. In the event that a class does not meet the minimum entry requirement, the OA reserves the right to eliminate the class. Boats that were entered in a class that was subsequently eliminated will be invited to join an appropriate remaining class provided they meet all the eligibility requirements of that class.

5. ENTRY AND FEES

- 5.1. Eligible boats may enter by completing the online entry form at www.rolexbigboatseries.com and paying the full entry fee on or before July 31, 2018 to avoid a \$200 late fee penalty.
- 5.2. A \$100 early entry discount will be offered to boats that enter by June 1, 2018. This discount applies to the date the payment is received.
- 5.3. No entry will be accepted on or after September 1, 2018.

- 5.4. The entry fee is \$22.50 per foot of overall boat length, rounded up to the nearest whole number. Payments shall be made online by credit card or by StFYC member charge. An entry is not considered complete until the full entry fee has been received.
- 5.5. If a boat must withdraw, she shall notify the [StFYC Race Office via email](#). The entry fee will be refunded per the following schedule:

Request for refunds made:	Percentage of entry fee refunded
On or before July 31	100%
August 1 – August 31*	80%
On or after September 1	0%

* if a boat enters a class that subsequently does not meet the minimum entry requirements, she will receive a 100% refund if she does not subsequently join an established class.

5.6. Additional Entry Requirements:

- An accurate crew list shall be submitted online via Yacht Scoring by 1700 PDT September 5.
- For boats competing in a handicapped class, a valid rating certificate shall be submitted online by September 1. Boats may not change their rating certificate after September 1, except as a result of a rating protest or to a correct an error by their RA.

6. SCHEDULE

For a schedule of social events, please refer to the additional event information, herein and/or www.rolexbigboatseries.com

DATE	Event	All times are given in PDT
Friday, August 31	Entry Deadline	2359
Saturday, September 1	Rating Certificate Due (if applicable)	2359
Wednesday, September 5	Crew List Due	2359
Wednesday, September 12	Registration at StFYC	1000 - 1730
	Competitors' Briefing at StFYC	1800 - 1830
Thursday, September 13	2 races	First warning signal at 1100
Friday, September 14	2 races	First warning signal at 1100
Saturday, September 15	2 races	First warning signal at 1100
Sunday, September 16	1 race	First warning signal at 1100
	No warning signal made after	1400
	Trophy Presentation	1600

7. SAILING INSTRUCTIONS

- The sailing instructions will be available online 1700 PDT September 5, 2018.
- Questions regarding the notice of race or sailing instructions, must be submitted in writing to the StFYC Race Office via email racing@stfyc.com no later than 1700 PDT September 11, 2018. Responses from the race committee or jury will be posted to the official notice board and online.

8. VENUES AND COURSES

- Racing will take place on San Francisco Bay.
- Starting areas: See Attachment A, herein.
 - Tl: Treasure Island Starting Area will be approximately 0.5nm west of Treasure Island.
 - ALZ: Alcatraz Starting Area will be off the western face of Alcatraz Island.
- The race committee reserves the right to relocate any starting area for any reason.
- Courses will use both fixed and drop marks. A partial list, of some of the possible marks that may be used is listed in Attachment A. The race committee will publish a complete description of the marks with the sailing instructions.

9. PENALTY SYSTEM

- 9.1. An international jury will be constituted in accordance with RRS Appendix N. Decisions of the international jury will be final as provided in RRS 70.5.
- 9.2. RRS Appendix T – Arbitration will apply.
- 9.3. RRS Appendix V – Alternative Penalties will apply for all boats except the Pac52 class.
- 9.4. For the Pac52 class: The first two sentences of RRS 44.1 are changed to: ‘A boat may take a One-Turn Penalty when she may have broken one or more rules of Part 2 or rule 31 in an incident while *racing*.’

10. SCORING

- 10.1. One (1) race must be completed to constitute a series.
- 10.2. A boat’s series score will be the total of her race scores, with no score excluded. This changes RRS A2.
- 10.3. For the Pac52 class: RRS A4.2 is changed by replacing the word “series” with “race”.
- 10.4. For the Pac52 class: A series tie will be broken in favor of the boat with the best score in the final race. This changes RRS A8.
- 10.5. An ORR boat’s corrected time will be calculated using her SF Bay Time Correction Factor.
- 10.6. A PHRF Sportboat’s corrected time will be calculated using her NCPHRF Time-On-Distance (TOD) rating.
- 10.7. A Multihull boat’s corrected time will be calculated using her Time-On-Time (TOT) Time Correction Factor.

11. RADIO COMMUNICATION

- 11.1. Except in an emergency, a boat that is racing shall not make voice or data transmissions and shall not receive voice or data communication that is not available to all boats.
- 11.2. With respect to RRS 41 – Outside Help, attention is drawn to [World Sailing Case 120](#). This interpretation clarifies the application of RRS 41 and governs boat’s actions while racing.

12. SUPPORT BOATS [NP]

During racing all support boats must stay clear and outside of race committee boats or boats flying a jury flag or press flag at all rounding marks, start and finish lines except when rendering assistance to a boat in danger either at the boat’s request or at the request of the race committee.

13. HAUL OUT RESTRICTIONS [NP]

No boat shall be hauled out during the regatta except with and according to the terms of prior written permission of the race committee.

14. PRIZES

Take home prizes will be awarded based on participation. In addition to take-home prizes, the following perpetual trophies will be awarded: St. Francis Perpetual, City of San Francisco Perpetual, Atlantic Perpetual, Keefe-Kilborn Memorial, Richard Rheem Perpetual and Commodore’s Cup.

15. DISCLAIMER OF LIABILITY

Sailing is an activity that has an inherent risk of damage and injury. Competitors in this race participate entirely at their own risk. See RRS 4, Decision to Race. The race organizers (OA, race committee, PC, host club, sponsors, or any other organization or official) will not be responsible for damage to any boat or other property or the injury to any competitor, including death, sustained as a result of participation in this race. By participating in this regatta, each competitor agrees to release the race organizers from any and all liability associated with such competitor’s participation in this event to the fullest extent permitted by law.

16. MEDIA

- 16.1. By participating in this event, competitors automatically grant to the organizing authority and the event sponsors the unconditional, perpetual right and authority to publish and broadcast anywhere in the world, for any purpose and in any media, the names, images, and biographical information relating to the crew and photographs, video footage, and audio recordings taken of the boat and its crew prior to, during, and after the regatta without compensation.
- 16.2. By submitting an entry form, the skipper acknowledges and accepts the media conditions referred to herein, and grants the rights referred to herein on behalf of all his crew members.

ADDITIONAL INFORMATION



EVENT BADGES

Included with the entry fee are event badges for the entire crew which provide access the club house and social events.

A limited number of guest badges will also be given to each boat at registration. Additional badges can be purchased, from the Front Desk for \$50 each. Anyone wishing to purchase food or drink in the Grill Room or Main Dining Room must obtain a Yacht Club Guest Card at the Front Desk upon arrival.

SCHEDULE OF SOCIAL EVENTS

Wednesday, September 12th

1800	Competitors' Briefing	Courtyard
1830-2000	Rolex Commodore's Reception – hosted appetizers	Golden Gate & Northwest Rooms

Thursday, September 13th

0730	Breakfast – Grab n' Go items for purchase	StFYC Docks
Post racing	Hosted Dock-Side Beer	StFYC Docks
1700	Regatta Social – hosted appetizers	Starting Line Room

Friday, September 14th

0730	Breakfast – Grab n' Go items for purchase	StFYC Docks
Post racing	Hosted Dock-Side Beer	StFYC Docks
1700	Mt. Gay Lawn Party – hosted Mt. Gay cocktails & Food Trucks	East Marina Lawn

Saturday, September 15th

0730	Breakfast – Grab n' Go items for purchase	StFYC Docks
Post racing	Hosted Dock-Side Beer	StFYC Docks
1930	StFYC Crew Dinner (no host) – Reservations will open on August 1 st and can be made with the StFYC Front Desk.	

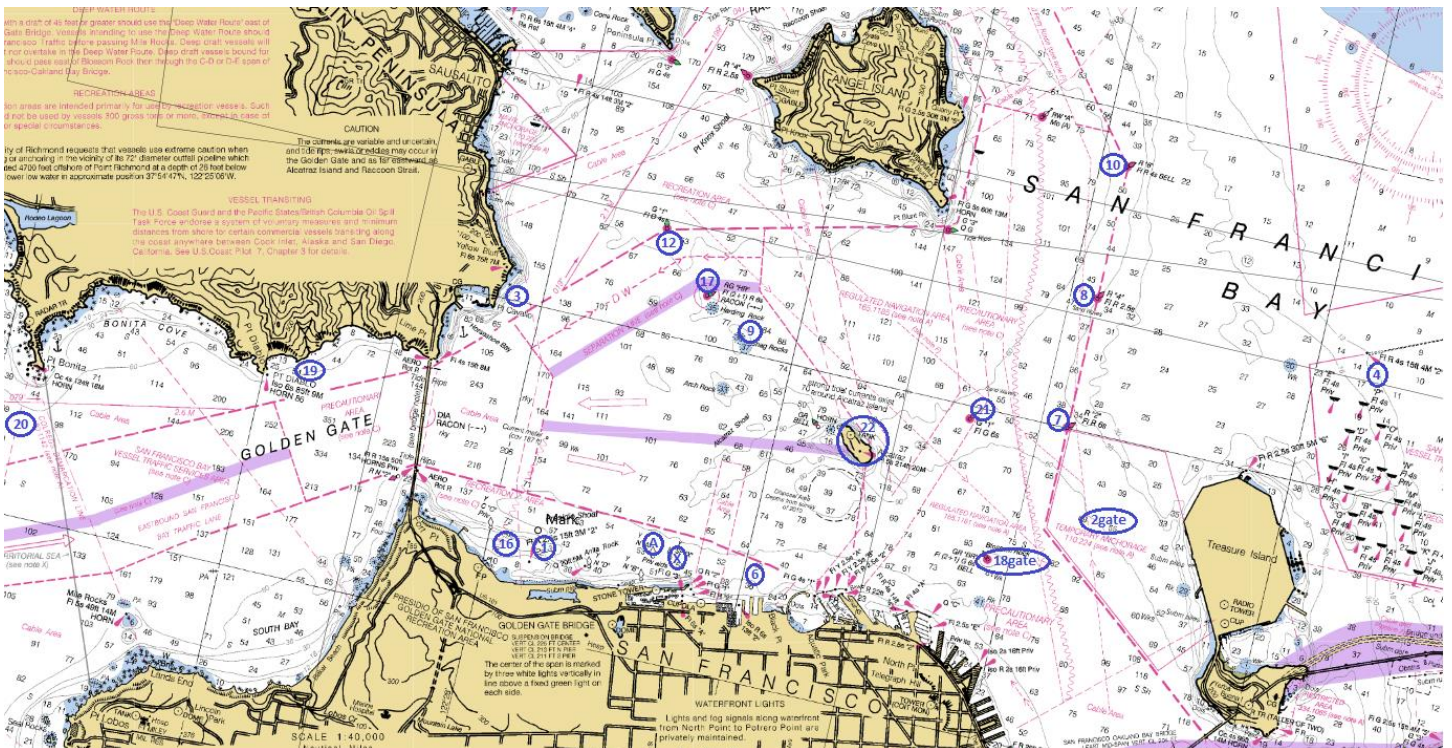
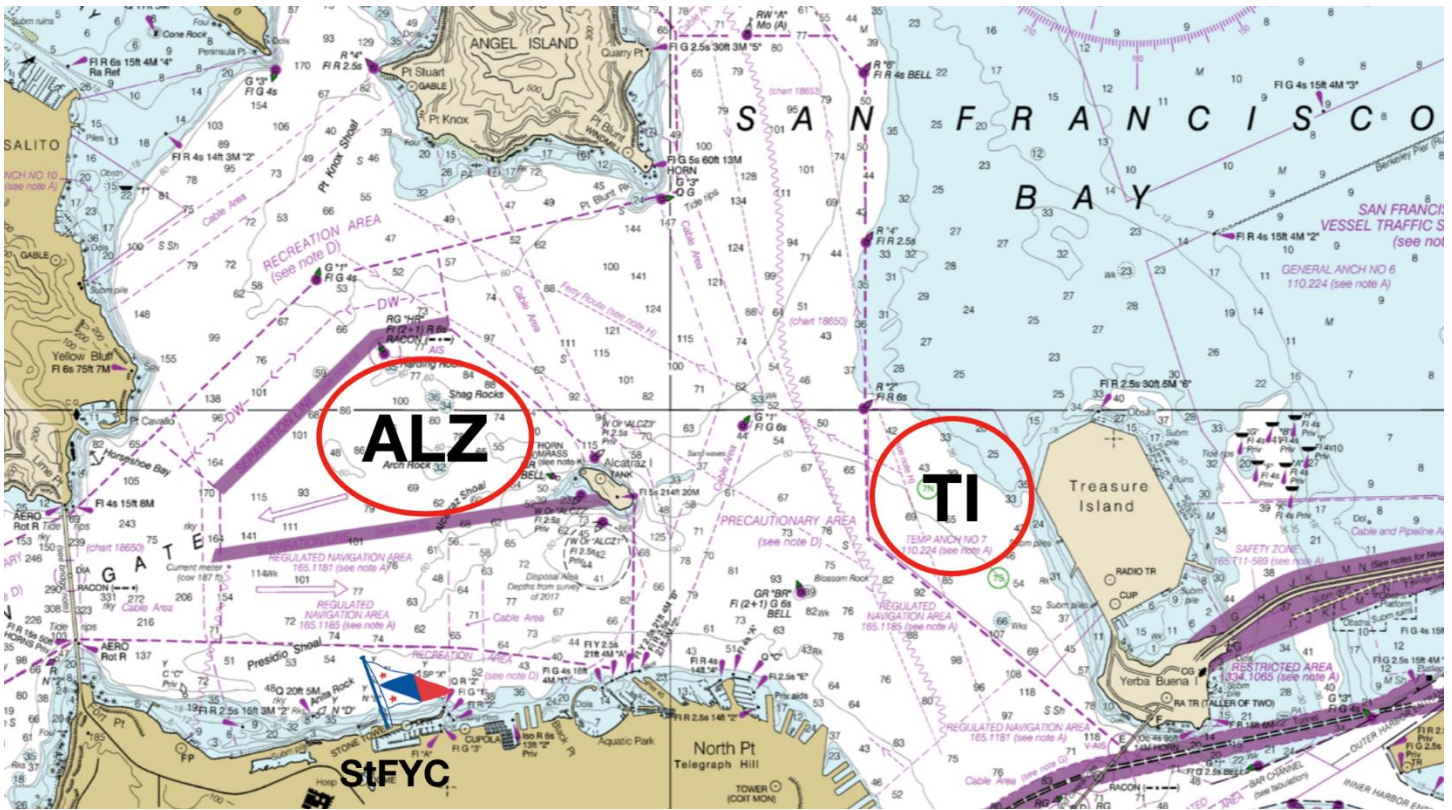
Sunday, September 16th

0730	Breakfast – Grab n' Go items for purchase	StFYC Docks
Pre racing	Sailor Salute: on your way to racing, pay homage to any sailor lost this year by dropping a flower in their honor near "A" Buoy. Flowers will be available at the StFYC Docks	
Post racing	Hosted Dock-Side Beer	StFYC Docks
1600	Rolex Trophy Ceremony - hosted appetizers	East Marina Lawn

BERTHING & TRAILER STORAGE

- Included with the entry fee is dockage from Monday, September 11th until Monday, September 18th in the SF Marina. We will make every attempt to dock all competitors close to St. Francis Yacht Club but please be aware due to limited dock space, it may not be possible. Boats needing berthing will be assigned a dock space by the StFYC Dockmaster.
- Storage of any sailing equipment or boat gear is not permitted on any docks. Violation of this rule may result in the removal of docking privileges during the event, and/or a \$250 fine from the SF Marina Yacht Harbor office or StFYC.
- Please note that the parking area surrounding the St. Francis Yacht Club is City owned property. Competitors who would like to keep a trailer (storage or boat) in the City parking lot must visit the Race Office immediately upon arrival for an overnight parking permit. Unregistered storage trailers may be ticketed and towed by the City of San Francisco.
- All boats and trailers will be stored at the direction of the StFYC Dockmaster or Race Coordinator.

2018 Rolex Big Boat Series NOTICE OF RACE Attachment A – Course Area(s) & Description of Marks



NOTICE OF RACE

Description of Marks

The race committee will publish a complete list of marks with the SI.

Mark	Description
A	Outer Yellow sphere "A" approx. 400 yards north of StFYC Race Deck
B	Inner Yellow Sphere "B" (Billingham) approx. 50 yards north of StFYC Race Deck
X	Yellow/Blue sphere "X" approx. 400 yards north of Golden Gate YC
1	Inflatable mark set 0.20nm at 350°M from FI R 2.5s "2" at Presidio Shoal
2gate	Inflatable mark set as a leeward gate set 0.80nm at 050°M from Green/Red "BR" FI Bell at Blossom Rock
3	Inflatable mark set approx. 300 yards south of Point Cavallo
4	Inflatable mark set 0.40nm at 040°M from Treasure Island North Light FI R 2.5s "6"
6	Inflatable mark set 0.20nm north of Fort Mason piers
7	Red "2" FI R 6s, 1.05nm west of the northern end of Treasure Island
8	Red "4" FI R 4s Horn, 1.0nm east of Point Blunt
9	Inflatable mark set 0.33nm at 115°M from Green/Red "HR" 1 Qk FI R at Harding Rock
10	Red "6" FI R 4s, 1.10nm northeast of Point Blunt
16	Yellow Can "TB" (Tom Blackaller) 0.45nm east of Fort Point
17	Red/Green "HR" 1 Qk FI R at Harding Rock (1.12nm at 286° from the northern most point on Alcatraz Island)
18gate	Leeward gate between Green/Red "BR" FI Bell at Blossom Rock, and an inflatable mark set to the north
19	Inflatable mark 0.18nm @ 065° M from Pt. Diablo Light
20	Red/Green FI (2+1) R6s Bell (ocn) 0.60nm southwest of Point Bonita
21	Green "1" FI G 6s East of Alcatraz Island (0.70nm @ 047°M from Alcatraz Light FI 5s 214ft 20M)
22	Alcatraz Island